

PHONE : +94-11-226 4203 FAX : +94-11-225 9916 AFS : VCBIYOYX VCCCYAYX E-mail : aimhq@airport.lk ddgasr@caa.lk	DEMOCRATIC SOCIALIST REPUBLIC OF SRI LANKA AERONAUTICAL INFORMATION SERVICES (AIM/HQ) AIRPORT & AVIATION SERVICES (SRI LANKA) (PRIVATE) LTD BANDARANAIKE INTERNATIONAL AIRPORT COLOMBO KATUNAYAKE, SRI LANKA	AIP SUPPLEMENT 02/25 12 MAR 2025
--	---	---

AD

Limitations to ongoing aircraft operations at Bandaranaike International Airport Colombo (VCBI)

(AIP SUP 01/25 information revised)

1. Introduction

- 1.1 The purpose of this AIP Supplement is to inform all aircraft operators about the limitations, affecting ongoing aircraft operations at Bandaranaike International Airport Colombo, due to the construction of the new Terminal Building (T2) and the associated new Pier Buildings.
- 1.2 The “New Ground Service Equipment (GSE) Route”, which was published in AIP SUP 01/25 - Appendix B, has been updated to reflect several modifications made to this route.
- 1.3 The “Parking stands availability and available refueling methods”, which was published in AIP SUP 01/25 - Appendix C, has been revised due to the extension of the ongoing construction.

2. Limitations to ongoing aircraft operations

- 2.1. TWY – E1 is available only for the aircraft taxi out operations.
- 2.2. Delays in airside ground handling services are anticipated due to the following airside rearrangements:
 - Parking stand locations are shifted in the Apron B and Apron C - Refer Appendix A
 - Service roads are shifted around Apron B and Apron C - Refer Appendix B

3. Parking stands availability and available refueling methods

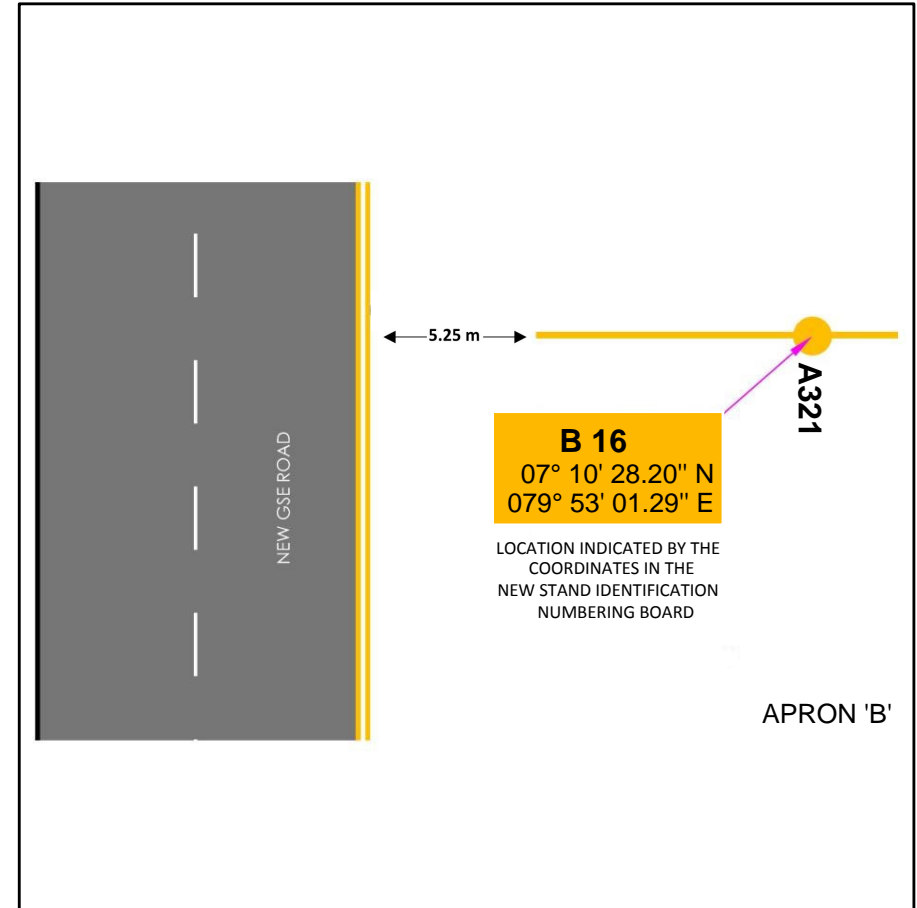
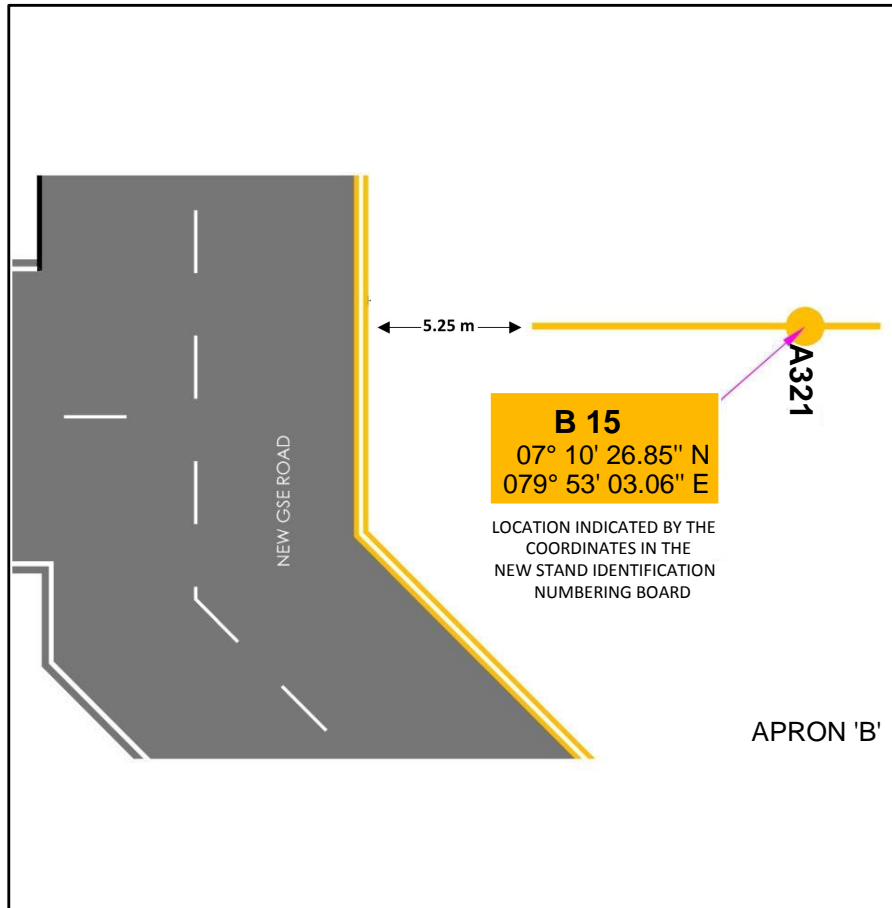
- 3.1. The availability of parking stands in Apron B, Apron C and Apron E will be limited, as detailed in Appendix C.
- 3.2. Due to the shifting of parking stands, the hydrant refueling system in Apron B and Apron C will be impacted. The associated limitations are detailed in Appendix C.
- 3.3. Refueling limitations at parking stands B16, B17 and C20 to C25, where hydrant refueling is unavailable, will remain in effect until the completion of the “Terminal 2” project.
- 3.4. Due to ongoing construction work, only parking stands A9 and E41 are available for A380 aircraft operations.

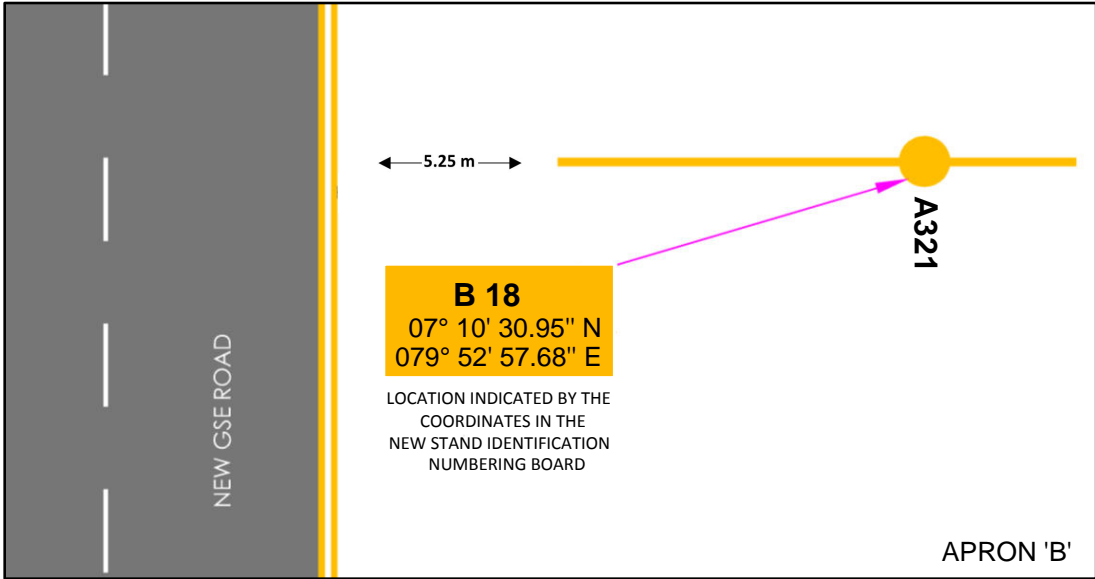
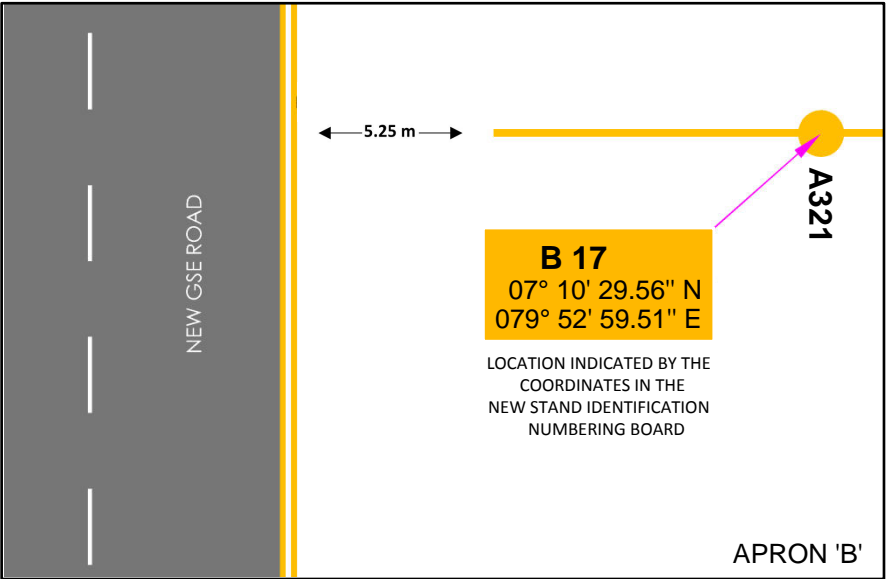
4. Cancellation

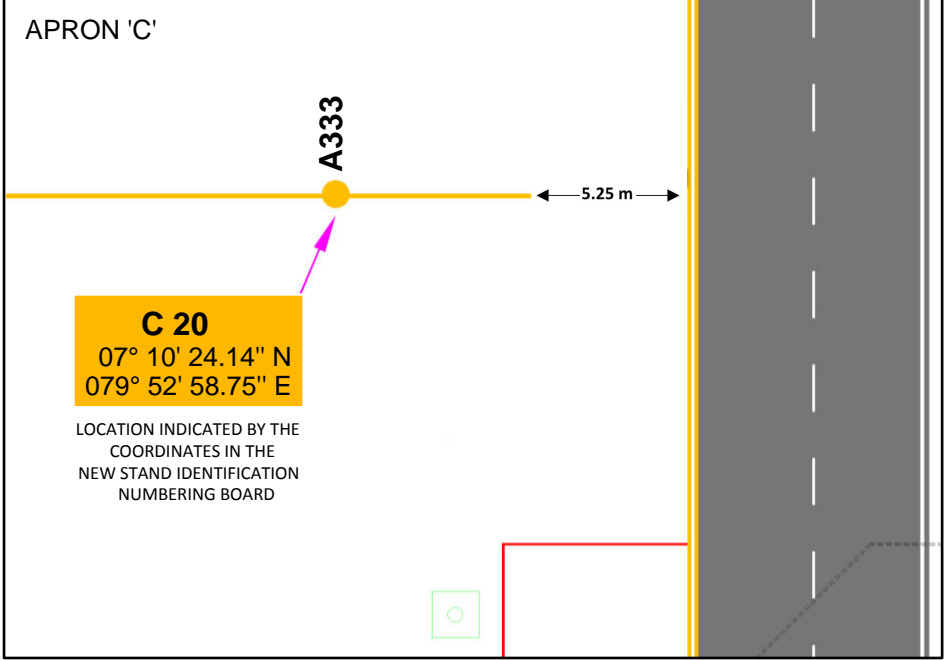
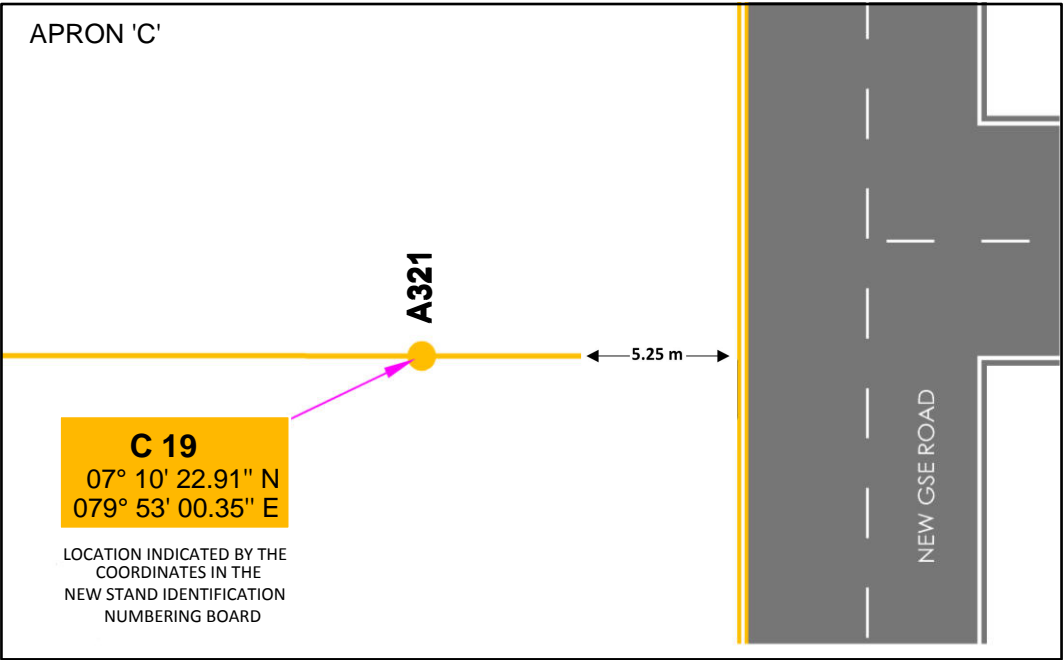
- 4.1 AIP SUP 01/25 is hereby superseded and AIP SUP 02/25 remains current, until the cancellation is notified by a NOTAM.

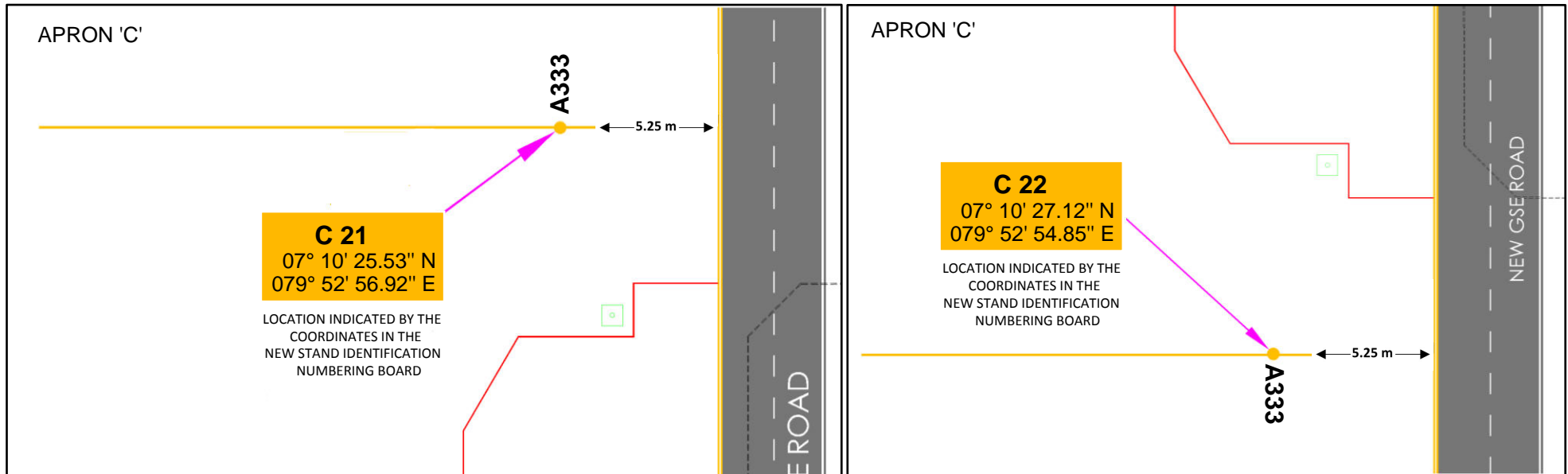
AVM Sagara Kotakadeniya (Retd.)
Director General of Civil Aviation and Chief Executive Officer
Civil Aviation Authority of Sri Lanka

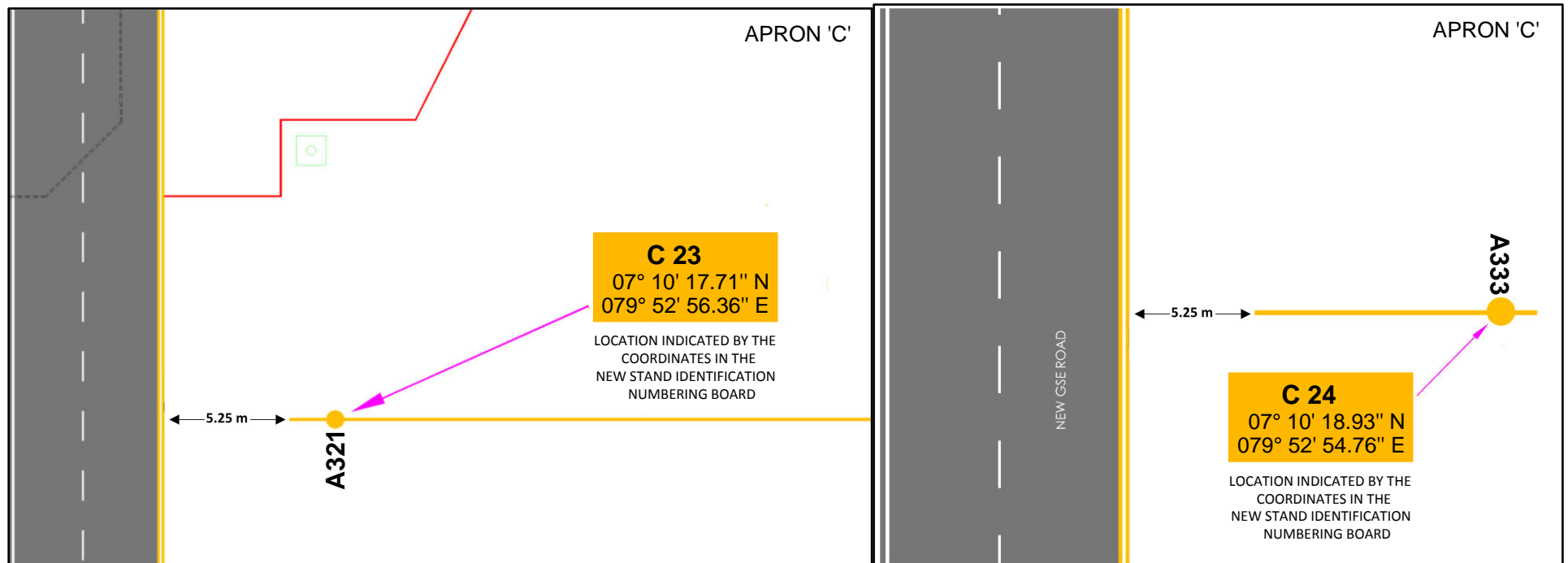
Shifted parking stands locations in Apron B and Apron C

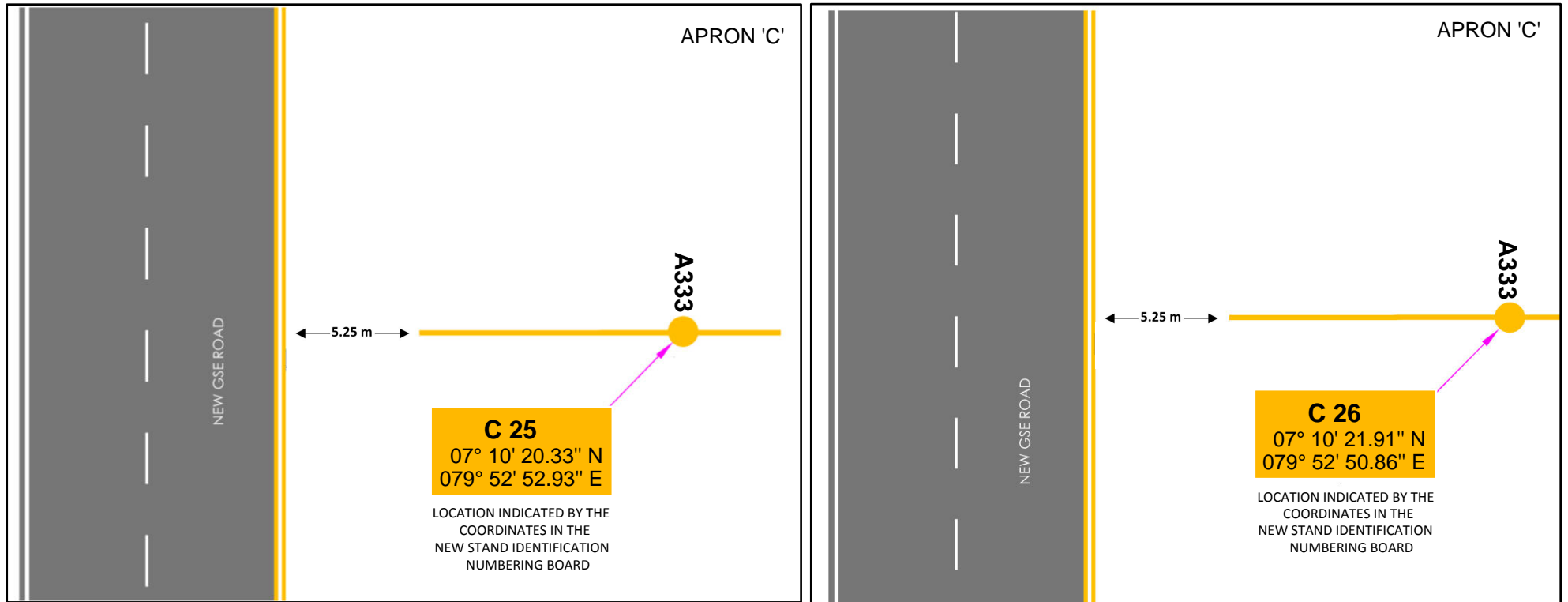




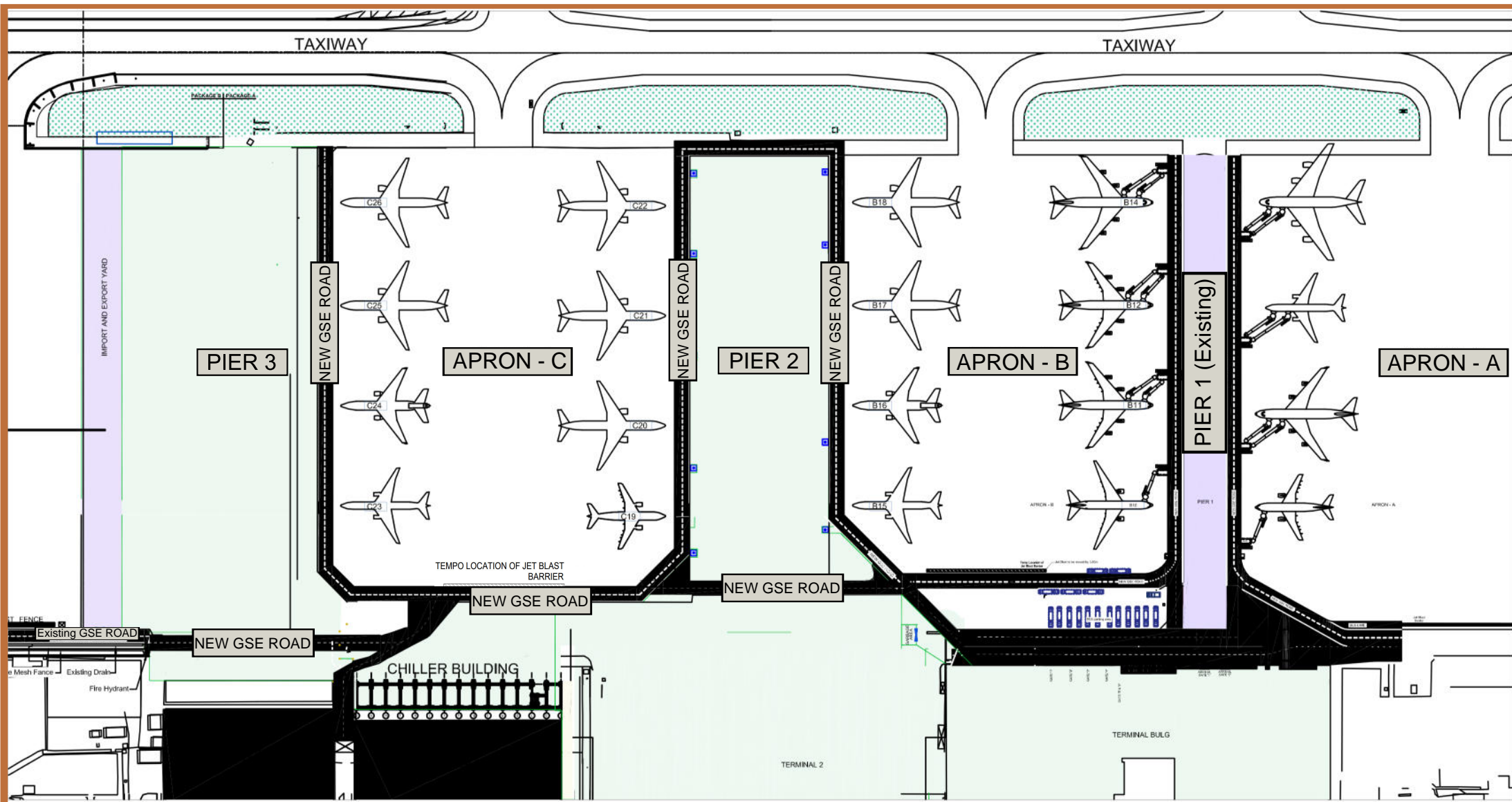








New Ground Service Equipment (GSE) Route



**Parking stands availability and available refuelling methods
(From 12 MAR 2025 to 31 JUL 2025)**

Apron	Parking stand	Parking stand availability/ Refuelling method available
A	A1 to A9	AVBL/FHS AVBL
B	B10 to B14	AVBL/FHS AVBL
	B15 and B18	Closed
	B16 and B17	AVBL/Manual refuelling
C	C19 and C26	Closed
	C20 to C25	AVBL/Manual refuelling
E	E27 to E35	Closed
	E36 to E49	AVBL/FHS AVBL

Remark: Parking stands E32 to E35 limited for tow operations and idle parking only.

FHS - Fuel Hydrant System

Note: Refer NOTAM issued for further updates.